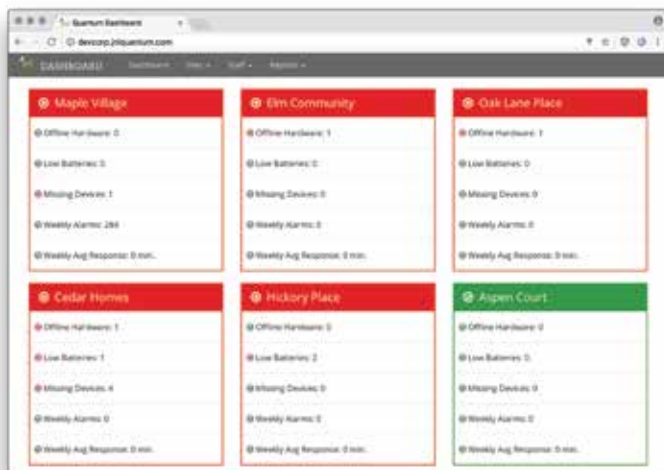


QUANTUM™ CORPORATE DASHBOARD

Featuring unified reporting and centralized management, the Quantum Corporate Dashboard leverages the cloud to assist with the administration of multiple Quantum systems at your facilities.

The Corporate Dashboard reports can be used to identify which of your facilities are busiest, which areas and shifts in those facilities require the most resources, and which types of calls are most frequent.

MONITOR PERFORMANCE



Built on the same advanced technology as Quantum Insights™ reporting, the Corporate Dashboard provides an overall view of the Quantum systems in all of your facilities, down to the daily details of a specific facility.

A quick-view dashboard highlights all of the systems corporate-wide and provides accountability for both resident care and system maintenance.

CENTRALIZED MANAGEMENT

Staff software logins and door access can be remotely managed, granting corporate staff access to multiple facilities at the same time.

Facilities can be grouped together and assigned to the staff responsible for them, allowing for granular control of staff access to systems and doors at each facility.

